

Discover Art in a Day

Notes for teachers



Frances Cotton Circa. 1655 Dutch School or British
(English) School IPSMG: R. R.1957-129

We ask that all teachers and accompanying adults read over the information in this pack well in advance of your visit



Christchurch Mansion

Discover Art in a Day

Contents

Session Summary

- Aim
- Learning outcomes
- Curricular links
- Duration
- Group sizes
- Adult: Pupil Ratio

Before your visit

- General activities
- Session-related activities

During your visit

- Session Structure
- Activities
- Floorplan

After your visit

- General activities
- Session-related activities
- Evaluation

Mansion information

- Address and contact details
- Facilities and access
- Helper's notes

Session Summary

During this full day session your pupils will discover a range of art forms around them – learning that art is more than just painting, and they will take part in a creative activity. They will also find out about a famous artist, sharing what they have found and enjoyed during their visit. These are all the criteria required to achieve a Discover Arts Award if you have chosen to do this on your visit.

The session can be adapted to work on the ground floor if members of your group will have difficulty getting upstairs; please make us aware of this in advance of your visit if this is the case.

The Discover Art in a Day workshop takes place in several rooms throughout the mansion so your pupils will also get to see and appreciate the wonderful mansion building and its collections.

Aim of this workshop

Pupils will deepen their understanding of what ‘the arts’ are, see a range of art forms displayed at Christchurch Mansion and learn about a famous artist. Our session aligns with the Key stage 1 and 2 art and design curriculum aims;

- produce creative work, exploring their ideas and recording their experiences
- evaluate and analyse creative works using the language of art, craft and design
- know about great artists, craft makers and designers, and understand the historical and cultural development of their art forms

Learning outcomes

- Pupils will be able to describe a range of art forms, and to give examples they have seen in the displays and in their wider frame of reference
- Pupils will be able to name and give information about a famous artist
- Pupils will be able to explain an artistic process which they have participated in during their visit

Duration
4 hours

Min and max group sizes
10 – 60 pupils

Adult: Pupil Ratio
1: 6

Before your visit

We believe that you will have the best possible experience if you prepare the pupils and accompanying adults in advance of the session. To do this we ask that all teachers and accompanying adults read over the information in this pack well in advance of the visit. We have also given some suggestion below for activities to do with your pupils to prepare them for their visit.

General activities

General pre-visit activities pupils can include:

- Discussing with them what a museum is, what is a gallery, is there a difference?
- What will they be doing on the day? What sort of behavior do you expect?
- What do they think of when you say 'art' - do they know any artists

Session related activities

Title	Activity	Resources
Discuss art	Ask your pupils to find out about the types of art their family members like. Can they name any famous artworks or artists? Could they look up some pictures online for homework?	Internet research

Preparing for your visit

Your children will be rotating around 3 activities so it is useful if you can have a list of your class split into 3 groups with an adult allocated to them. You will not be in the same place at the same time so each adult will be 'alone' with their group, but this is obviously in a public place and museum staff will be moving between the groups to guide and support.

Ipads or digital cameras are also handy for the dressing up/ create a portrait activity for some funny memories!

During your visit

Session Structure for two classes 60 pupils

10.00-10.20	Arrival – jackets and bags drop off and welcome	
10.20-11.00	Group/class A Split into three groups. Art Detectives – explore the mansion to find different art forms	Group/class B Split into three groups. Art Detectives - explore the mansion to find different art forms
11.00-11.10	Sharing your discoveries as a group	
11.10-12.00	Group A Become a creator - Opportunity for creativity!	Group B Artist explorer – Find out all about some famous artists, their work and who they were.
12.00-12.45	Group A lunch Feel free to pop into the park for a runaround!	
12.45 - 1.00	Afternoon introduction Share learning, feedback from the morning, and head off for the afternoon’s workshops	
1.00-1.50	Group A Artist explorer – Find out all about some famous artists, their work and who they were.	Group B Become a creator - Opportunity for creativity!
13.50-14.00	Sharing your discoveries as a group 2pm - Depart	

Activities

Introduction

Your Museum Learning Assistant will welcome you to the Mansion and introduce the group to the building, the collections and the activities. They will start a discussion about what the pupils think 'art' is and can be. Please be ready to split each class into three smaller groups for the activities, with enough accompanying adult helpers to work with each group, *if these groups could be 'ready to go' it would be helpful.*

Art Detectives (teacher led with support from museum learning team)

Pupils will be challenged to go on an art hunt through some of the rooms, tasked with identifying and recording examples of as many different sorts of art they can find. Clipboards, pencils and worksheets will all be provided.

Learning about an artist or 'Artist explorers' (teacher led with support from museum learning team)

Children are challenged to find out about a famous artist from our collection. As part of this they are encouraged to look closely at a piece of art created by these artists and will have access to additional information in the form of factsheets and a timeline which the adults may need to help them with reading.

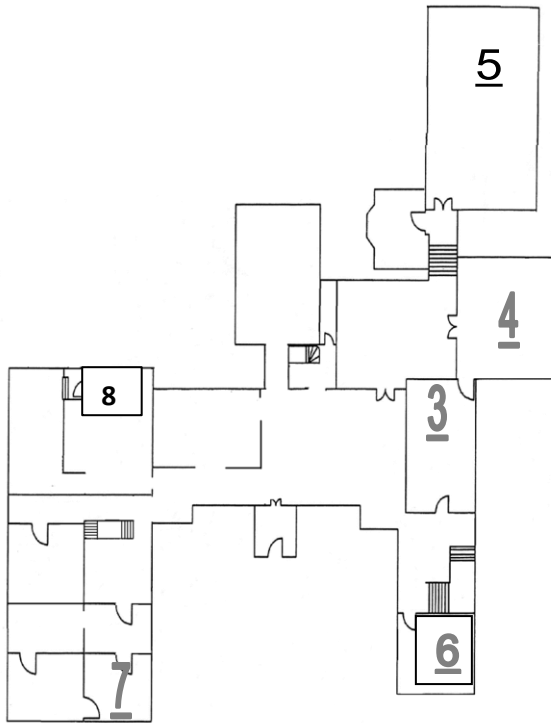
Museum staff are happy to answer questions as the children work on this activity.

Practical art activity or 'Become a creator' (teacher led with support from museum learning team)

In this activity the pupils will be given one of the following art forms to try:

- Create a design for a plate or cup in the kitchen
- Create a wallpaper design based on something they have seen in the mansion
- Working in small groups use costume and props to draw a portrait
- Children also have the option to write a poem inspired by something they have seen in the mansion at any of the above stations if they finish or are struggling to find their muse!

Floorplan



The areas you will be using are:

1. Reception/shop. Main Hall
2. Lower Tudor Chamber
3. Fonnereau Dining room
4. Green Room
5. Wolsey Art Gallery
6. Queen Anne Room
7. Estate Office
8. Kitchen

Depending on the needs of your group the education room on the first floor may also be used for you to have your lunch.

There is no access for people with mobility difficulties to the first floor. If this impacts your group, then please contact us so we can make suitable adjustments.

After your visit

Below are general and specific follow-up activity ideas that you may wish to use back at school to reinforce what your students learned during their visit.

General activities

General post-visit activities for can include:

- Asking the pupils what objects they saw, what types of art work they remember seeing. What senses did they use in the Mansion? What did they wish they could do again?
- Explore the idea of dance and music as art forms back in the classroom
- Writing a letter to their Museum Assistant to tell them what they learned and enjoyed

Session-related activities

Title	Activity	Resources	Curriculum Link
Scrap-book style poster	Make a scrap-book style poster to show what they learned at the mansion	General craft materials	Art
Creative reflection	Ask the children to produce a piece of creative work which reflects the information they learned about a famous artist	General art or writing materials or tools	English and Art
Mini museum	Create their own mini art museum using objects from home with labels written by them.	Found objects, art materials	English, Art and Design

Evaluation

We are always trying to improve our school sessions and will ask you to complete a short evaluation form after the session. We are also keen to hear what your pupils thought of their experience and welcome any comments they may have as well. We take your feedback seriously and use it to improve the quality of our sessions.

Mansion information

Address and contact details

Christchurch Mansion
Soane Street
Ipswich
IP4 2BE

Phone 01473 433554

Email museums@ipswich.gov.uk



Facilities at the Mansion

All our sites have a, shop, accessible toilets and coach drop-off point. The building does not offer flat access throughout. Please contact us if your group has any needs or requirements.

Helper's notes

Thank you for accompanying the class on their visit to Christchurch Mansion to learn about the Arts.

Our priorities for the day are for the children to learn lots in a safe, fun and exploratory way – you can support this by helping the children to think and use their imaginations and by asking questions rather than giving answers, encouraging them to be involved and give things a go.

Some children may not have been to a museum or gallery before so it would be great if you could support them to explore and discover whilst conducting themselves sensibly. We want our mansion to be a fun and playful environment whilst being mindful of the fact we do have precious and fragile objects that we need to take care around. We also do not expect children to be silent; they are children, and we hope they do talk excitedly about what they are doing – just be mindful that the museum will still be open to the public so there may be other people around, so 'indoor' voices are appreciated! We would be grateful if you could ensure that everything is treated carefully.